

# The Courtyard

Where to live and experience college while maintaining your spiritual walk.

College Life with Personal Options - Affordable Living - Community - Christian Relevance

**A non-denominational Christian Co-Ed Cooperative with emphasis on community service,**



**leadership, & discipleship with the finest amenities just three blocks off the OSU campus.**

## A Defining Time...

College holds more than a cap, gown and diploma for the years you spend there. Who you are as an individual rather than a part of your family; deciding if what you believe is really real; and choosing how you live your life will all be defined.

The Courtyard is a community where being a Christian is more than a label, but a follower of Jesus Christ. During this defining time you will forge friendships with other believers and connect with people who will support you when you need it. Residents are encouraged to be active in a church body and be engaged in some form of ministry service. Monday nights residents all meet for a great dinner and house fellowship. Worship, dream, hope, and grow.



## So Many Choices...

The Courtyard provides a place to enjoy college life with personal options; but here you can enjoy late night coffee house discussions or open mic nights. Enjoy concerts, Bible studies, and parties in this 20,000 sq. ft. house. Find your place in the outdoor courtyard, private corners or student lounge with video games and ping-pong.

## The Best Of Everything

Compare the options in Corvallis and you will find the Courtyard is the best of everything. Our rooms and apartments have private bathrooms and space for your stuff. The Courtyard is next to the OSU campus and within walking distance of shopping.

*Call the Director today for a tour and a meal. Applications are available online at [www.CourtyardLife.org](http://www.CourtyardLife.org). Space is limited. Applicants' preferences for room type, room-mates and interview times accepted now. Rates for Room & Meals are online.*

*Parking on premises is available.*

## You Decide...

While you are attending OSU, LBCC or other college, you will decide who your friends will be, the type of life you want to live, what you really believe, and what you will become. The Courtyard is a place to enjoy your choices and prepare with others climbing the same mountain.



## Private Bathrooms, Apartments, and Dorm Style Rooms.



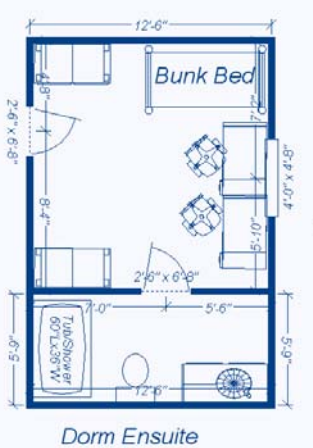
The Courtyard Director lives here full-time to manage the house, to work with student leadership, assist with resident life and social activities.



These are sample room layouts. The Courtyard has a men's wing, women's wing and the apartments are co-ed-by-neighbor. The four apartments and ten rooms can hold up to 42 residents. Although the costs vary depending on the room type, the rates per month includes your room, meals and amenities and are about 60% of a standard OSU dorm and meal plan. Each resident will have about three chores per week as part of the co-op.

### Amenities Included

- Wireless high speed Internet
- Laundry facility free
- Cable TV service in each room 71 Chan.



The Courtyard Chef prepares delicious lunches and dinners for the residents Monday-Friday. A separate resident kitchen is open for breakfast and weekends.



Apartment 4 Living, Kitchen & Bath; Bedroom in foreground



## Courtyard

2435 NW Harrison Blvd.  
Corvallis, OR 97330  
Phone: 541.602.2435

Director@CourtyardLife.org  
[www.CourtyardLife.org](http://www.CourtyardLife.org)

The Courtyard is owned by Relevance, a non-profit Christian organization not affiliated with any single church.